

FRIENDS OF EGYPT

DAY 01: Arrival at Cairo airport, meet and assist through formalities transfer to the hotel for overnight.

DAY 02 :Breakfast, visiting the **Egyptian Museum**, famous for its antiquities from **Egypt's** Pharaonic period, dates back some 50 centuries, and includes the fabulous treasures of **King Tut Ankh-Amon**. Afternoon excursion to **Old Cairo**, the old Coptic churches, and the oldest **Jewish Synagogue** of **Ben Ezra**. Continue your visit to the **Citadel of Salah El-Din** and **Mohamed Ali alabaster Mosque**, followed by a visit to the Medieval bazaars of **Khan ElKhalili**, where you can bargain for your jewelry and hand –tooled leather items. Return to your hotel for dinner and overnight.

Egyptian Museum



The Egyptian Museum owes its existence to the Egyptian Antiquities Service, established by the Egyptian government in 1835 to limit the looting of Egypt's priceless artifacts.

The museum opened in 1858 with a collection assembled by Auguste Mariette, the French archaeologist retained by Ismail Pasha. It was originally housed in an annex of the palace of Ismail Pasha in Giza, the museum moved to its present location in 1900

Citadel



The citadel was constructed by Salah El Din on the Moqattam hills in 1183 AD overlooking the whole city to be his defensive point against the attacks of the Crusaders. Salah El Din appointed to be the governor of Egypt after the death of the Sultan of Damascus, Noor-el-Din.

Alabaster Mosque



The mosque is situated in the Citadel of Cairo in Egypt and commissioned by Muhammad Ali Pasha between 1830 and 1848.

Situated on the summit of the citadel, this Ottoman mosque, the largest to be built in the first half of the 19th century, is, with its animated silhouette and twin minarets, the most visible mosque in Cairo. The mosque was built in memory of Tusun Pasha, Muhammad Ali's oldest son, who died in 1816.

Khan el-Khalili



DAY 03: After breakfast drive to **Memphis** at the edge of the western desert, the capital of the ancient kingdom, and one of the most important monuments throughout the history of ancient **Egypt**, from here we drive to **Sakkara** the vast necropolis of ancient **Memphis**. Visit the **Step Pyramid** of **Zoser** (3rd dynasty, 2668 BC – 2649 BC). Then visit the Pyramid of **Unas**, in the afternoon, drive to the **Pyramids of Giza**. **Cheops** Pyramid, the largest of the three, was built in the 4th dynasty about 2690 BC,. One of the seven wonders of the ancient world .In front of the pyramid of **Chephren**, there stands the **Sphinx** a lion with a Pharaoh's head thought to be a portrait of the pharaoh **Chephren**. Continue our tour to the **Solar Boat** museum where a dismantled river barge of king **Cheops** was found, and has been masterfully re-assembled, Transfer back to your hotel, Later in the evening you will be met and transferred to the magnificent **sound and light show** at the **Giza plateau**. Later transfer back to your hotel for dinner and overnight.



DAY 04: Transfer to the airport for flight to **Luxor**. Arrival at Luxor then transfer to your Nile cruise, Embarkation on ship. Visit the stunning monuments of **Luxor and Karnak**, the greatest cities of Ancient **Egypt**. Overnight on the ship. All meals include.

Luxor Temple



Luxor Temple, or the Temple of Luxor, is among the most beautiful Temples in Egypt. It was known in the New Kingdom period as Ipt-Rsyt, which means the southern shrine. This was to differentiate between this Temple and Karnak Temple, which was the northern house of Amon Ra.

Amenhotep III built Luxor Temple. The architect and overseer of the works of construction was the genius Amenhotep, son of Habu. The Temple runs close and parallel to the river Nile from north to south. It was constructed on the site of a small Temple of Amon, built by kings of the 12th dynasty. At the time of Amenhotep III the Temple was only 190m in length and 55m in width. Basically, Luxor Temple was consecrated to Amon Ra in his fertility aspect.

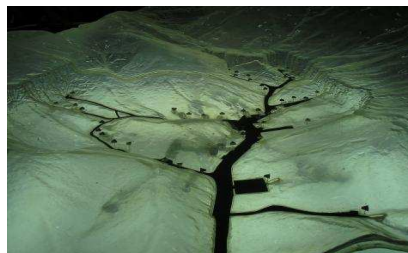
Karnak Temple



The Temple of Karnak is the largest Temple in the World! The complex contains a group of Temples such as the Great Temple of Amon Ra, the Temple of Khonso, the Ipt Temple, the Temple of Ptah, the Temple of Montho and the Temple of the God Osiris. A 20m high, mud brick enclosure wall, surrounded all of these buildings.

DAY 05: Focus on west bank of the Nile to visit the **Valley of the Kings and Deir El-Bahari, Queen Hatshepsut's** monumental rock-cut temple. Stop for pictures at the two **Clossi of Memnon** guarding the valley. Drive back to the ship .Sailing to Edfu .Overnight on the ship. All meals include.

Valley of the Kings



The Valley of the Kings was the royal cemetery for 62 Pharaohs, and is located on the west bank at Luxor. The only entrance to this place was a long narrow winding path. This was a secret place, where sentries were placed at the entrance of the Valley, as well as along

the top of the hills, in the hopes of discouraging tomb robbers, who had in the past plundered all royal tombs, including the treasures of the Pyramids! Some thefts were probably carefully planned, but others were spur of the moment, as when an earlier tomb was accidentally discovered while cutting a new one and workmen took advantage of the opportunity.

Hatshepsut



Hatshepsut was one of the most interesting female figures and most capable Pharaohs of Egyptian history (1490-1468 BC), so our visit to her 3,500 year old mortual temple in the Valley of Kings (Thebes West) was in many respects a quite special experience.

DAY 06: Board horse-drawn carriages for a drive through **Edfu** to the temple of **Horus** with its menacing black stone statue of the **Falcon** god. Later, re-board your boat and sail to Kom Ombo to visit **Sobek** temple, then proceed sailing to Aswan. Overnight on the ship. All meals included.



Kom Ombo



Hours Temple

DAY 07: After breakfast, enjoy an excursion to the **Old Dam** and the gigantic **Aswan High Dam** completed in 1970. Board a motor launch to the **island of Phiale** to visit the temple of **Isis**. Also stop at the ancient granite quarries to see the famous **Unfinished Obelisk**. Overnight on the ship. All meals included.

Un-finished Obelisk



The
Unfinished

Obelisk lies, in its original location, in a granite quarry in Aswan. It is 42m in length and was most probably abandoned when some cracks appeared in the rock, during its construction. Had this obelisk been

completed, it would have been the heaviest obelisk ever cut in Ancient Egypt, weighing nearly 1100 tons! It is believed that it was constructed and abandoned during the reign of Queen Hatshepsut (18th Dynasty).

During the earliest ages, the Ancient Egyptians knew the so-called "Pn-pn", which was a pyramidal stone with a pointed top and according to their beliefs the "Pn-pn" symbolized the primeval hill from which the world first appeared. Then, in the course of time, this Pn-pn evolved to be an obelisk usually made of granite with a pyramidal shape on top.

Philae Temple



Philae Island was a rocky island in the middle of the River Nile, south of Aswan. It was called in Hieroglyphic "Apo" which means Ivory. It was also known by the Greek

“Elephantine”, most probably because it was an important centre of trade, especially for ivory.

The Ancient Egyptians built a beautiful and magnificent Temple on this island for the Goddess Isis, but the Temple became submerged after the first Aswan dam was built in 1906, and it was not until the seventies that many nations attempted to save the Temple

The High Dam



The High Dam of Aswan is a great project. In fact it was one of the most important achievements in the last century in Egypt, even for many years it was a symbol of the New Era of the Revolution of 1952. It provided Egypt with water and electricity and secured the country of the risk of the destructive inundation.

The Aswan High Dam was a great project! In fact it was one of the most important achievements of the last century in Egypt, for many years symbolising the New Era of the Revolution of 1952. It provides Egypt with water and electricity, and secures the country from the risk of the destructive inundation of the River Nile.

DAY 08: Disembarkation at Noon time, free at Leisure in Aswan, Late afternoon transfer to the Aswan rail-way station to get the sleeping train to Cairo (1st class), dinner on board

DAY 09: Breakfast on board Arrive at Giza rail-way station, then transfer to **St. Catherine** along the **Gulf of Suez** visiting the Canal of Suez en route , then proceed to the lush green **Oasis of Wadi Faran** (Biblical **Raphidim**) arrive in the afternoon to **St. Catherine** area, dinner and over night.

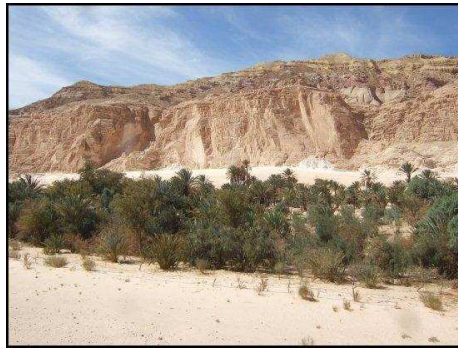
DAY 10: Early morning, walk up to **Mount Sinai** 2285 above sea level, attain the summit named after **Moses** where God delivered the Ten Commandments, time on top to take in and photograph the imposing & spectacular view of the sun coming up over the hills of Sinai. Descent through the stairway carved into the mountain by **St. Catherine** monks. Breakfast at the hotel, and then visit to the famed 6th century Monastery named after **St. Catherine**, the martyr of **Alexandria**. Drive to Sharm El-Sheikh visiting **Ain Khoudra** (associated with biblical **Hazerot**) en route through the desert (Wadi Ghazala), a dimension of splendor and beauty speaks for itself. Arrival at Sharm El-Sheikh, dinner and overnight.



St. Catherine Monastery



Ain Khoudra



Ain Khodra oasis beckons in the distance and the contrasting mixture of granite and sandstone formations make for a pretty landscape as you head there.

DAY 11: Free at leisure

DAY 12: Free at leisure

DAY 13: Transfer to Sharm El-Sheikh airport for final departure
